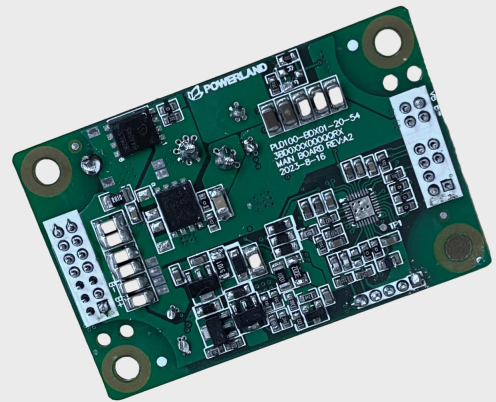




## Description

This converter can perform bidirectional power transmission between 5~20 Vdc and 30~54.6 Vdc, with USB-PD 3.1 and C-type ports, high efficiency, and high temperature resistance.



## Applications

- portable power source
- on-board battery

## Features

- Non-isolated bidirectional DC/DC conversion in current mode / voltage mode
- Charging mode: 100W
- Discharging mode: 65W
- Efficiency: 97% max
- -10 ~ 40 °C operation temperature range
- Open Frame

# Specifications

Model	100 W non-isolated bidirectional DC/DC converter	
Charging Mode	100W	
	Input voltage range	19.5~21Vdc
	Output voltage rating	53.4~54.6Vdc
	Maximum output current	1.85A
	Output voltage ripple	0.5A
	Maximum input current	6A
	Output voltage rise time	1~200ms
Discharging Mode	65W	
	Input voltage range	30~56Vdc
	Maximum input current	2.5A
	Rise time	For 5V mode: <10mS For 9V/12V/15V/20V mode: <275mS
Protection Function	OVP、OCP、OTP、SCP	
Environmental Requirements	Operating ambient temperature	-10~40℃
	Storage temperature	-20~70℃
	Relative humidity	5%~95%
Communication Protocol	TBD	
Efficiency	97%max	
Weight	/	
Dimensions (LxWxH)	/	